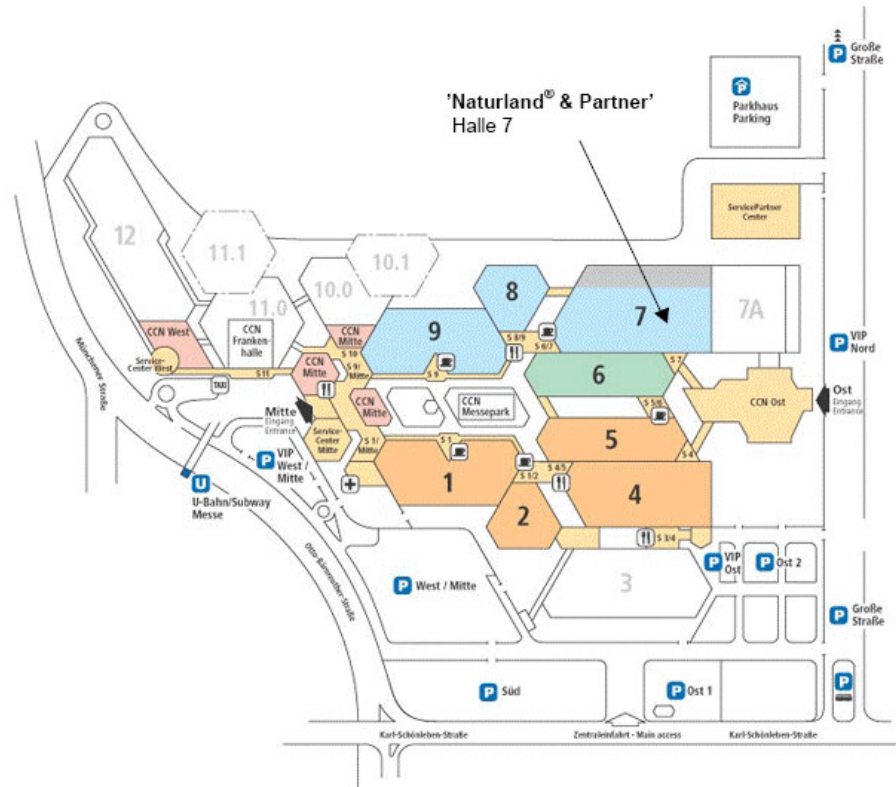


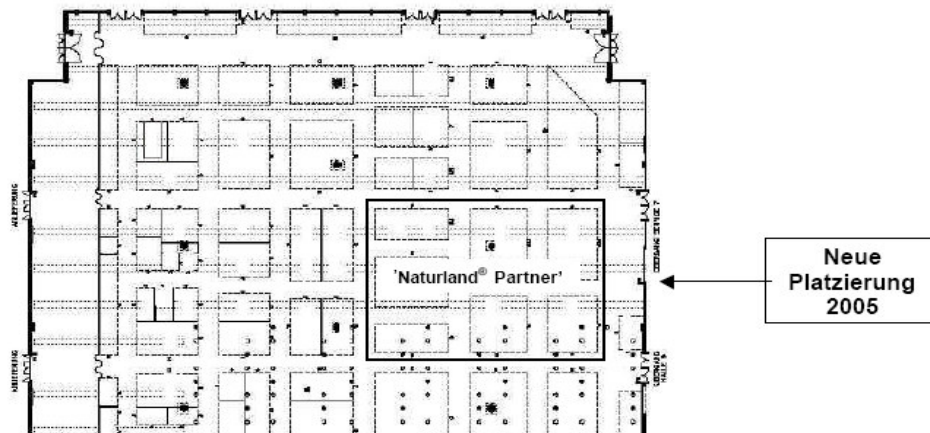
# Where to find KMC at BioFach 2005:

## Hall 7, Stand 343b at ADVICE

### Geländeplan und Hallenbelegung

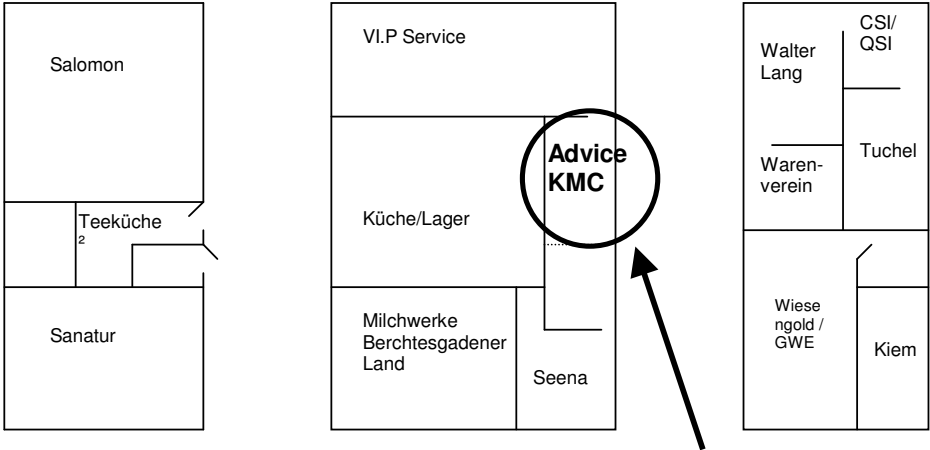


### Halle 7, 'Naturland® & Partner'

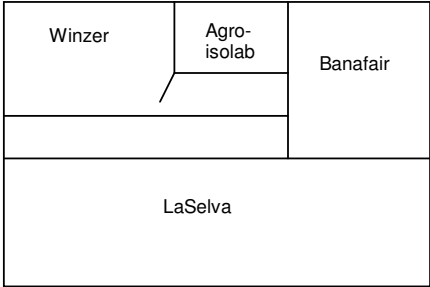
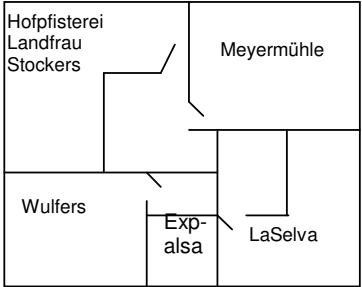
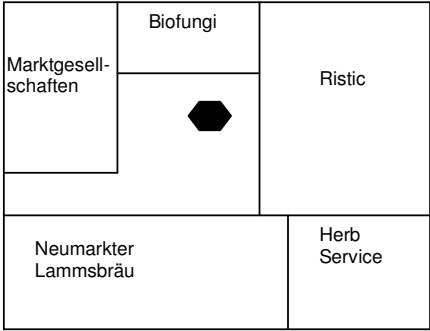


# Where to find KMC at BioFach 2005:

**Hall 7, Stand 343b at ADVICE**



**ADVICE  
343b**



**We are looking forward to see you.**